

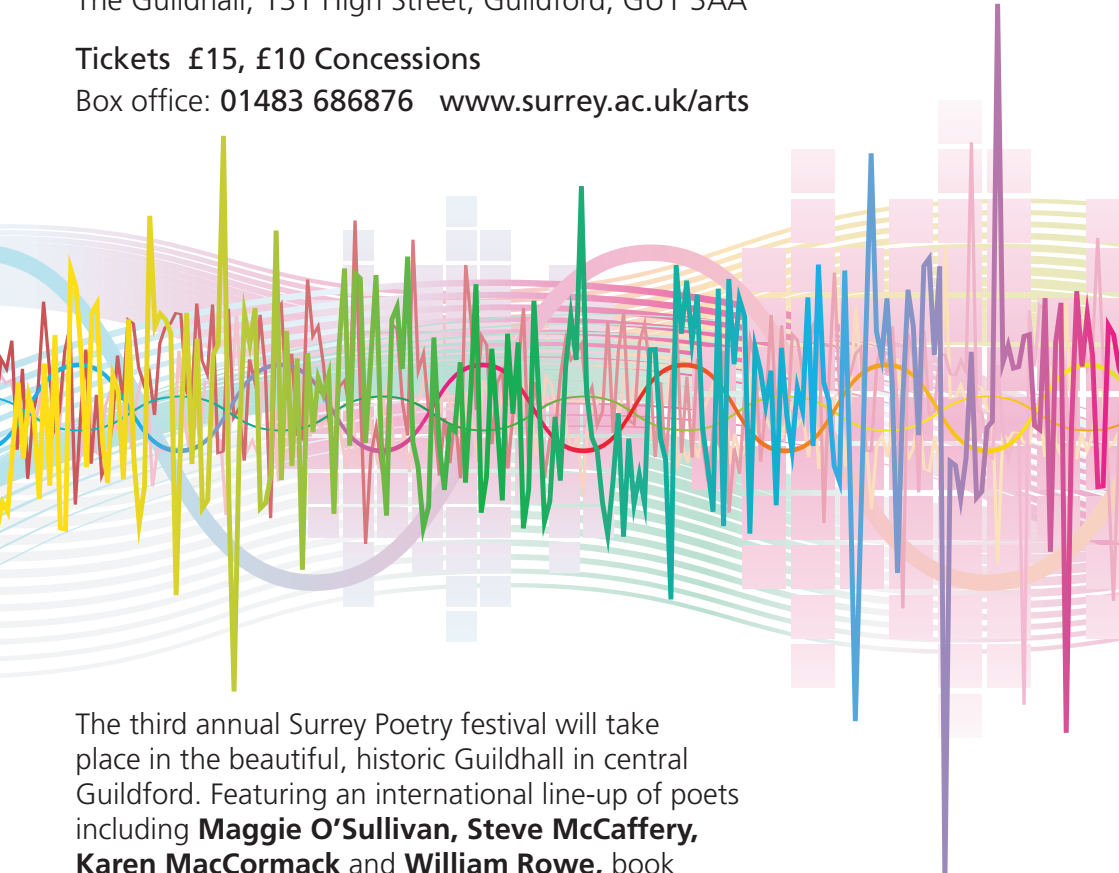
SATURDAY 8 JUNE 2013, 13.00 - 20.00

SURREY POETRY FESTIVAL 2013

The Guildhall, 131 High Street, Guildford, GU1 3AA

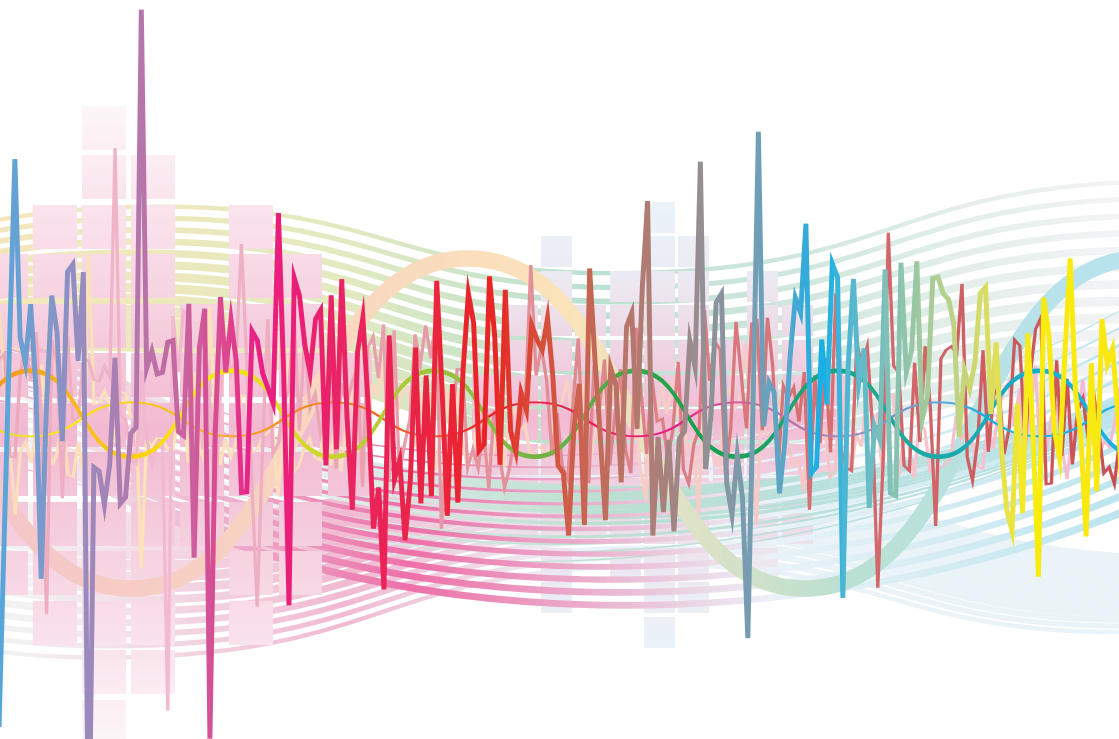
Tickets £15, £10 Concessions

Box office: 01483 686876 www.surrey.ac.uk/arts



The third annual Surrey Poetry festival will take place in the beautiful, historic Guildhall in central Guildford. Featuring an international line-up of poets including **Maggie O'Sullivan, Steve McCaffery, Karen MacCormack** and **William Rowe**, book launches, poetic papers and a student showcase, it offers an opportunity to enjoy the varied and creative work produced by some of the most exciting, thoughtful and questioning UK poets.

For full programme and further information:
www.surrey.ac.uk/surreypoetryfestival



The Surrey Poetry Festival is a unique opportunity to listen to the work of an eclectic range of poets and writers including **Carol Watts, MJ Weller, Nat Raha, Mendoza, Sophie Robinson, Doug Jones, Ulli Freer** and **Stephen Mooney**. There will also be Readings by current BA students.

A section on Poetics will feature the presentation of 2 papers by Professor William Rowe and Karen MacCormack.

Three new books will also be launched:

- ***Sun Dog*** (Veer Books) by Carol Watts
- ***AGAINST WHITE*** (Veer Books) by Karen MacCormack
- ***countersonnets*** (Contraband Press) by Nat Raha

The historic Guildhall is situated in Guildford High Street with easy access by train, nearby parking or on foot. Come and enjoy the full day's programme or just drop in for a taster.

To book in advance call **01483 686876**
www.surrey.ac.uk/arts